

# Electric Deflection of Electrons

## Objective

The purpose of this experiment is to observe that the spatial deflection of an electron in a cathode ray tube is directly proportional to the “deflection potential”.

## Materials

1. Banana-to-spade leads
2. Cathode ray tube
3. Fluke digital multimeter
4. High voltage power supply
5. Pasco (30 VDC) power supply

## Background and Procedure

In this experiment our interest will be centered on the trajectories of electrons and how they are involved in the basic operation of the cathode ray tube (CRT). Specifically we shall explain electron trajectories by considering the electron to be a point mass that obeys Newton’s laws of motion. We will observe that the deflection of an electron in a CRT is directly proportional to the electric potential between two plates between which the electron travels (see Figure 1).

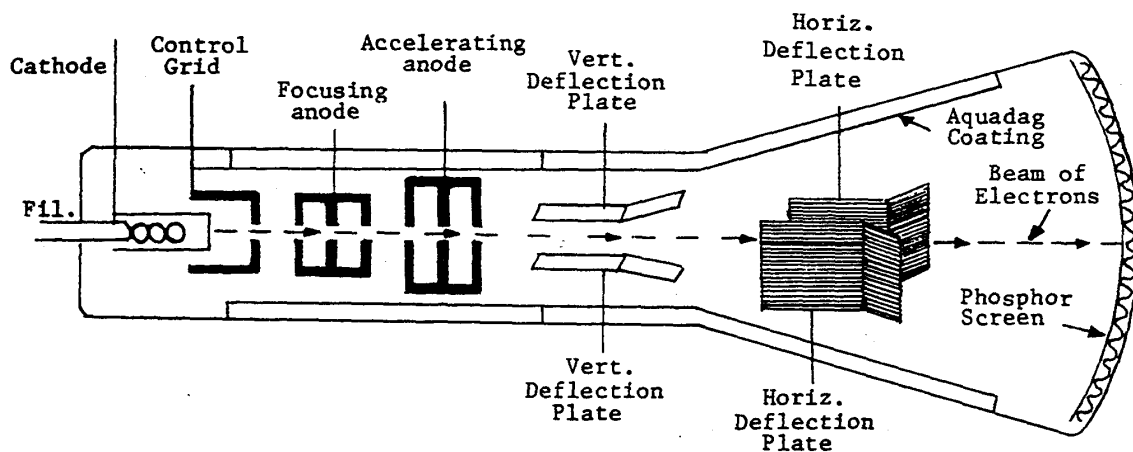


Figure 1: *CRT*

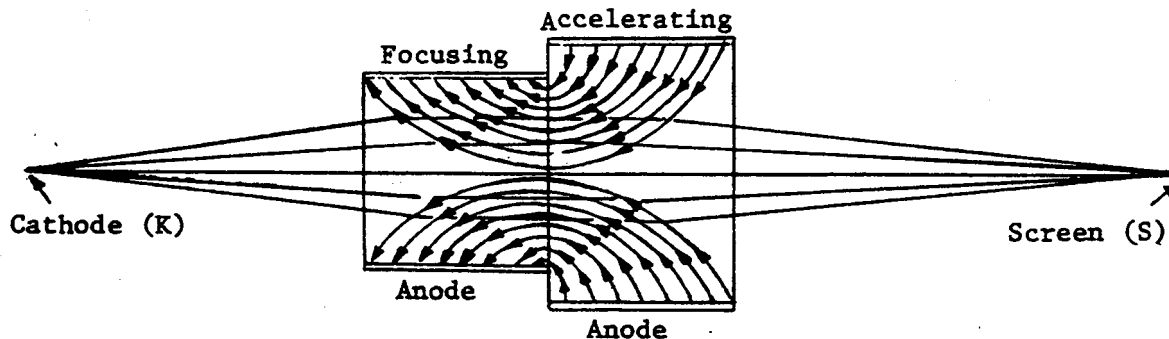


Figure 2: *Typical Focusing Action*

Figure 1 shows a typical construction of a CRT. Electrons emitted from a heated cathode are accelerated toward an anode. Actually, for focusing purposes, more than one anode is used as illustrated by Figure 2. Figures 1 and 2 are not precise drawings of the 3BP1 CRT used in this experiment. The control grid in Figure 1 is only for the purpose of regulating the density of the electron beam and does not enter into calculations in this experiment. An electron is accelerated along the axis of the CRT from the cathode to the last anode through a difference in potential  $V_{acc} = V_C + V_B$ ; thus the work done on it is  $eV_{acc}$ , where  $e$  is the charge of the electron. This work is the change in kinetic energy, and because the electron started from rest, the final kinetic energy is

$$\frac{1}{2}mv_z^2 = 1eV_{acc}$$

(The axis of the tube is taken as the  $z$ -axis, and  $V_{acc}$  accelerates the electron *only* along the  $z$ -axis, thus  $v_x$  and  $v_y$  are taken to be zero.) From this the emerging speed may be computed if other quantities are known. The electron enters the region between the deflection plates; it has an electric field directed toward the negative plate.

$$E = \frac{V_{def}}{d}$$

While the electron is between the plates there is an electric force directed toward the positive plate with a magnitude of

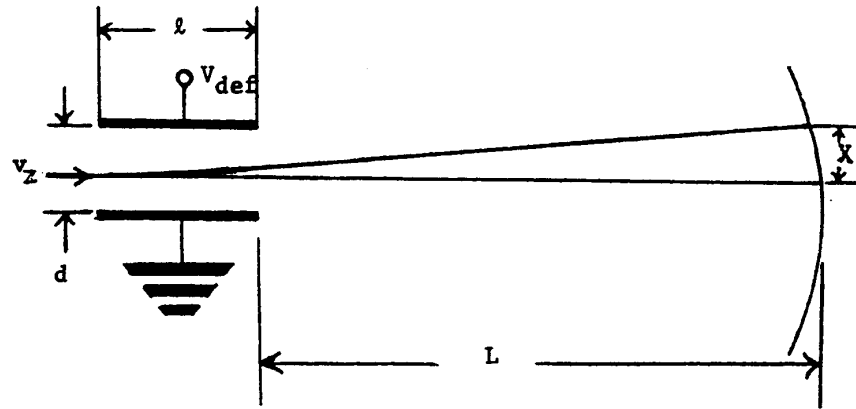
$$F = eE$$

Consequently its acceleration is given by Newton's second law:

$$a = \frac{F}{m} = \frac{eE}{m}$$

This acceleration is, of course, towards the positive plate. The electron is given a lateral component of velocity  $v_x$

$$v_x = at_1$$



**Figure 3:** *Deflection*

where  $t_1$  is the time while between the plates

$$t_1 = \frac{\ell}{v_z}$$

and is displaced laterally an amount  $x_1$

$$x_1 = \frac{1}{2}at_1^2$$

After emerging from between the plates the electron, no longer in the electric field, travels at constant velocity to the screen, and because of a lateral component of velocity, it continues to be displaced laterally an additional amount  $x_2$

$$x_2 = v_x t_2$$

where  $t_2$  is the transit time to the screen

$$t_2 = \frac{L}{v_z}$$

The total lateral displacement is, of course,

$$x = x_1 + x_2$$

## Equipment Setup

The electrical connections are shown schematically in Figure 4 and pictorially in Figure 5. The deflecting plate leads are labeled  $x$  and  $y$  for horizontal and vertical. Both sets of plates produce deflections perpendicular to the tube axis that was labeled the  $z$ -axis above. We will use the horizontal deflecting plates in this experiment. The vertical plates are grounded

to prevent an unwanted buildup of charge. Reverse the  $x$  connector to change the direction of deflection (note the resistors are already attached to the connectors). The resistor in the cathode lead and the connection between terminals 2 and 3 are actually in the tube base rather than inside the glass tube itself.

IMPORTANT: If the regulated power supply that you are using does not look like the one at the top of Figure 5, check to see if it is Model No. IP-32. If it is, use the connections indicated at the lower left of Figure 5.

The filament leads (yellow wires) must be connected to the 6.3-volt AC supply. Note that C+ is internally connected to B-. Also note that each set of deflection plates and B+ are grounded.

After you make the electrical connections, turn the regulated power supply on to standby for about a minute while the cathode heats before turning to the DC on position. With the B supply somewhere above halfway on the range adjust the DC supply for a sharp, well-focused spot. The deflecting potential should be on zero while you are doing this. Notice that the spot is not at the center of the screen. The reason for this will be brought out in a later experiment. For the time being measure all displacements from this spot.

Record  $V_{acc}$  ( $= V_C + V_B$ ) (use the meter-select switch to have the meter indicate the voltage of interest) and record the displacement on the screen for several different deflecting potentials up to the maximum amount in each direction.

Unfortunately the marks on the screen of the CRT are in inches and, therefore, should be changed to metric units where detailed calculations are made, as in Part I of the analysis.

In construction most cathode ray tubes have deflection plates which are flared at the rear rather than parallel as in the above discussion. The final results are quite similar but precise computations are more complicated; so we shall, continue with the parallel plate equivalent. For purposes of calculations use the following values for the 3BP1 CRT:  $\ell = 2$  cm,  $d = 0.55$  cm,  $L = 11.8$  cm and, of course, the charge and mass of the electron are  $e = 1.6 \times 10^{-19}$  coulomb;  $m = 9.1 \times 10^{-31}$  kg.

## Analysis

### Part I

The following computations illustrate particle properties of the electron. For one deflecting potential in your data compute the

1. speed of the electron as it enters the region between the plates,
2. electric field between the plates,
3. acceleration of the electron while between the plates,

Figure 4

CREDIT: Several of the equipment pictures in this section and the next were taken from the Heath Company manual "Berkeley Physics Laboratory"

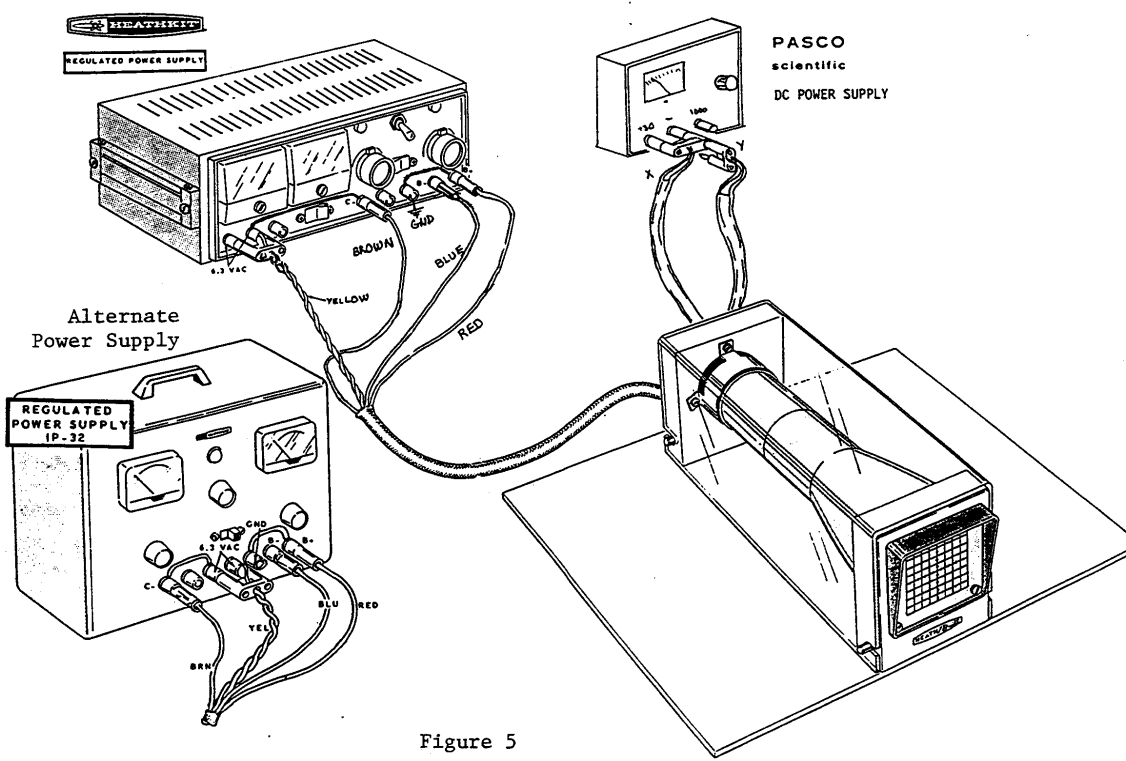
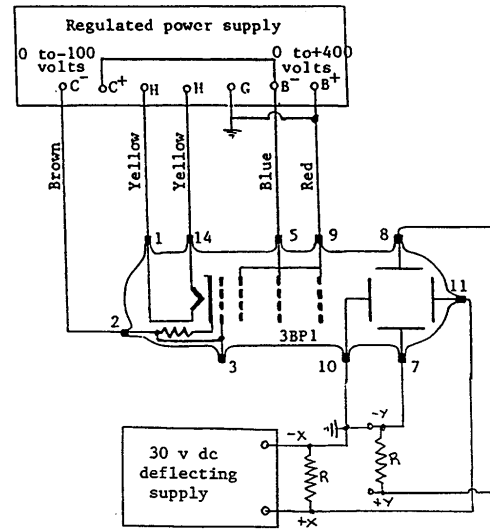


Figure 5

4. time between the plates,
5. lateral velocity as it emerges from between the plates,
6. lateral displacement as it emerges from between the plates,
7. time to go from the plates to the screen,
8. additional displacement while traveling from the plates to the screen,

9. total lateral displacement.

Is your computed displacement consistent with your measured displacement? Which do you trust most? Comment: The above computations may be carried out in symbols to give total lateral displacement

$$x = \frac{V_{def}\ell}{2V_{acc}d} \left( \frac{\ell}{2} + L \right) \quad (1)$$

Derive the expression in Equation (1).

## Part II

Plot deflection versus deflecting potential and comment on the significance of the shape of the plot. Is your plot consistent with the equation above? Determine the deflection sensitivity (deflection per unit deflecting voltage).